

# RIDING RAILWAYS NEWSLETTER



**Grand Scales**  
Quarterly

MARCH 2007

**Riding Railway Newsletter** is published each month by Robinson & Associates as a special service to our paid subscribers of the **Grand Scales Quarterly** and **7+RAILROADER** magazines.

**Robinson & Associates**  
PO Box 8953  
Red Bluff, CA 96080 USA  
530-527-0141  
Fax: 530-527-0420  
[www.grandscales.com](http://www.grandscales.com)  
[www.7plusrailroader.com](http://www.7plusrailroader.com)

Your submissions are always welcome, both for this electronic newsletter and for our print publications. Please send information to the address above or to

[mainline@sunset.net](mailto:mainline@sunset.net).

The information is prepared with the best efforts of the publisher and authors. The publisher makes no warranty of any kind, express or implied, regarding the information, ideas, and suggestions found herein.

Advertisements are welcome. To receive advertising information, send an e-mail request to [mainline@sunset.net](mailto:mainline@sunset.net).

Placements of advertisements in this journal do not indicate the publisher's endorsement of any particular product or service.

© 2007, Robinson & Associates

Hello everyone! And welcome to your March issue of the *Riding Railways Newsletter*. This issue has an article written some time back by Darrell Klompemaker of the Merrick Light Railway Equipment Works who writes about building Grand Scale trucks on a budget. Hope you enjoy it.

Well, we finally have updated our web pages, including the gift shop (<http://www.7plusrailroader.com/> and <http://www.grandscales.com/>). Take a look and see what's new. Would love to have your thoughts. This was my first time to personally work on web sites (having never done it before) so they aren't perfect. But I hope to keep them updated much more regularly now that I know how. So if you have a link to add, or something you think we should add to make them more interesting or helpful, please let me know. I'll do my best. Oh, and speaking of links, I have added quite a few to the links page in GSQ as well.

Regarding the **Riding Railway University Vol 3 & 4**, we, well, we really over estimated when they would be ready. And, they're not quite ready yet. I am *VERY* sorry about the delay. But the seminars are so helpful that I am confident that they will be worth the wait. Thanks for your patience.

We've been contacted by an auction house that will be selling off the Schrock equipment in Wakarusa, IN. While the majority of it will be the tractor collection, there will be some railroad equipment as well. To learn more visit their website (<http://www.aumannauctions.com/>). For those of you who may not remember the Old Wakarusa railway (before Delton Schrock passed away), you may enjoy reading issue 12 of GSQ. It was our cover story in that issue.

Regards,

*Susan*

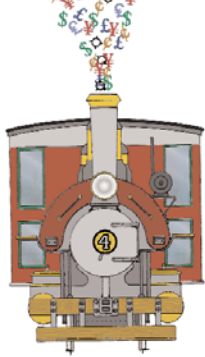
## HOW DO YOU TRANSPORT YOUR TRAINS?

We want to hear how you travel with your equipment to meets. Do you sit them in your trunk? Have a special trailer? We've heard some pretty interesting stories and seen some unique ways of transporting live steam locomotives and rolling stock.

### Share your experiences with us and you may win over \$200 in DVDs!

One name will be drawn at random from all entries. Three other names will be drawn for other gifts. Just send us an e-mail ([mainline@sunset.net](mailto:mainline@sunset.net)) with your information and how you travel with your trains. (Photos are appreciated too.) We will collect entries through the end of April, 2007. Please tell others about this contest by sending them a link to the 7+ web site (<http://www.7plusrailroader.com/>). The contest is on the front page. Thanks for sharing!

(Legal mumbo jumbo: No purchase necessary. . . void where prohibited by law.)



# GRAND SCALES ON A BUDGET

## ECONOMY TRUCKS THAT YOU CAN BUILD

By Darrell Klompaker

Over the past few years we have tried a number of different prototype designs that some may be interested in. We have worked to come up with a "Cadillac" design truck and an "economy" design truck. When working with these designs we try to include versatility, performance, and cost into new truck ideas. In an article to follow we will take a look at the "Cadillac" design for coach trucks. In this article we will cover our latest economy truck design.

No matter what size your railroad is, if your looking for an economical way to fashion truck sets without making up patterns, machining castings, or flame cutting, these trucks

(built from bar stock and off the shelf pillow block bearings) could be for you. All dimensions including wheel size can be changed to suite your own needs and bearings should be sized to fit your particular requirements (most bearing houses are very cooperative in helping you choose the roper bearing)

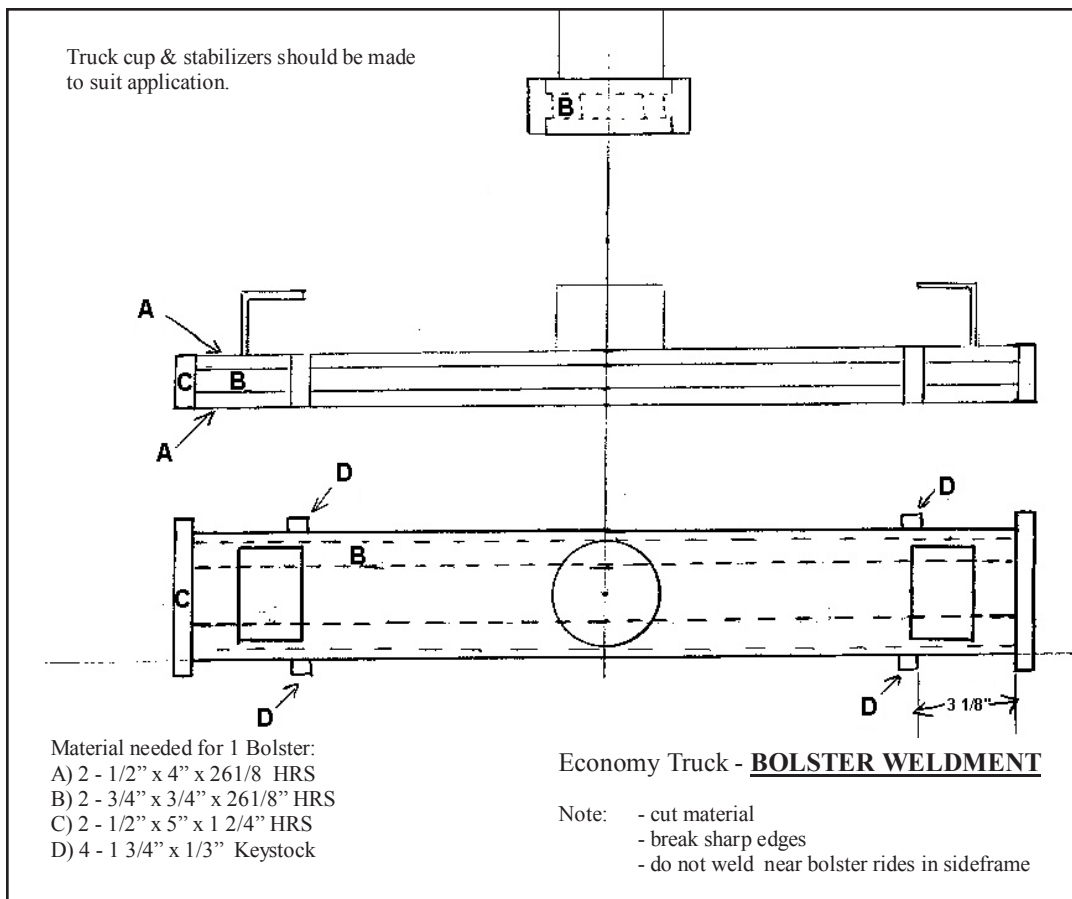
The dimensions given in these drawings were used to build a pair of trucks for our bottom dump gravel car. The car has a capacity of over 4 tons, and although this car sees only intermittent duty, the trucks have required no service except required lubrication in the past 18 months.

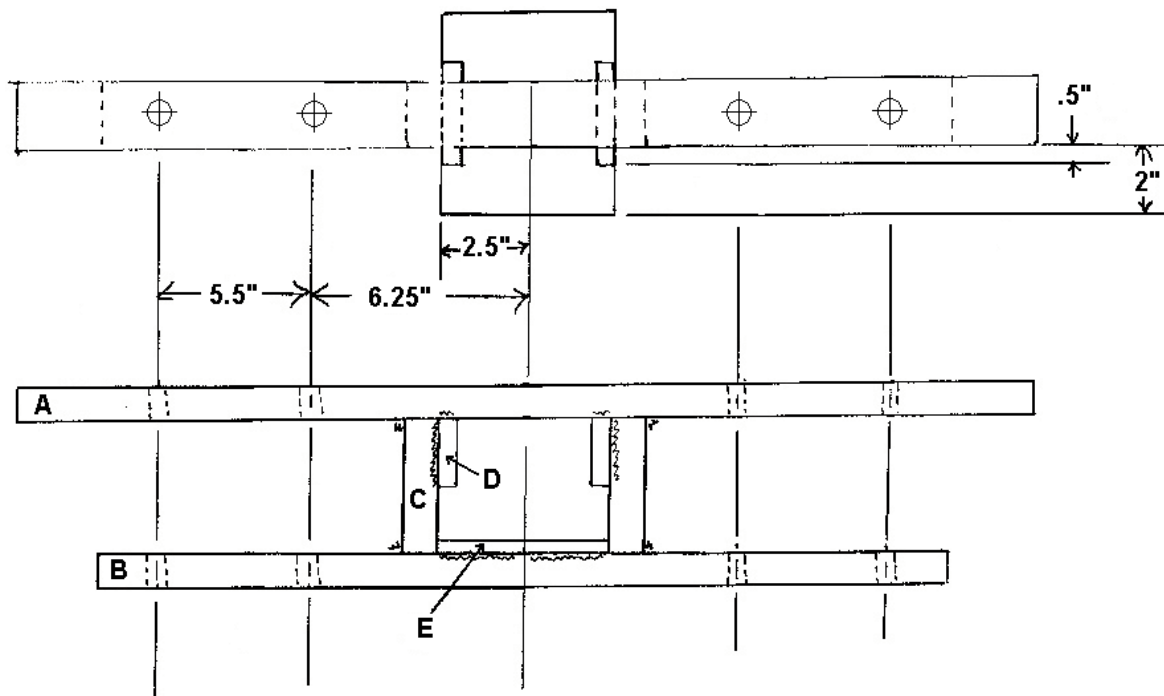
### GETTING STARTED

We usually start truck sets by machining and pressing together wheel sets first. Turning the axles and wheels are the only critical machining steps involved in the building of these trucks. If you don't have a lathe available to you, axles and wheels can be jobbed out to a local machine shop or wheel sets could be purchased from a locomotive works. Although our locomotive works would supply these products to you, you will soon find that the real economy is in turning the axles and wheels on your own lathe. If you do not own a lathe, consider taking a machine shop coarse at a local high school or technical college, and machine them as your project.

Once wheel sets have been made up the construction is simple,

start by cutting material to length. Break all sharp edges and round corners on side frame pieces D & E. Mark center lines on side frame top A and bottom B, then layout and drill for 1/2" holes that mount pillow block bearings. Lay out parts A, B, and C as shown on drawing. Use a square to line up center lines on A & B and weld in C from the bearing side only. When welding all parts of the side frame and bolster, take care to have all pieces square. Next weld parts D & E in as shown on the drawing. Do not weld on the inside area were the bolster will slide in and ride. Now you can cut your threaded rod to length and bolt your bearings in place. We use four nuts and lock-washers per threaded rod.





Pillow block mounting holes should be drilled to suit pillow block used.

**Materials needed for 2 side frames:**

- A) 2 - 1" x 2" x 30" HRS
- B) 2 - 1" x 2" x 25" HRS
- C) 4 - 1" x 2" x 4" HRS
- D) 4 - 1/2" x 2" x 3" HRS
- E) 2 - 3/8" x 4" x 5" HRS

**Economy Truck - Side Frame Weldment**

- Note:
- cut materials
  - drill holes
  - break sharp edges
  - DO NOT weld on the inside of bolster guide

One on top, one to bolt in the bearing, and one on each side of the bottom rail.

**THE BOLSTER**

Start the bolster by cutting materials to length and breaking all sharp edges. With one plate A lay out both pieces B and tack them in place recessed about 1/4" from edge to allow for welding later. Now welding from the inside attach end caps C. Next lay the second plate A on top. Weld in the recess were parts A & B meet along bolster sides. Weld on keyway stock parts D, weld on top, bottom, and back only. No welding should be done were the bolster rides in the side frame. The cup and stabilizers should be made to suite the individual car you are building trucks for.

On these trucks, we used 2" angle iron cut 3" in length welded to the bolster for stabilizers. We use tube stock for cups, usually a 3" O.D. tube welded on the inside on the trucks and a 3 1/8" I.D. tube welded on the outside on the cars.

**ASSEMBLY**

Assemble the trucks by slipping one side frame on both axles and bolt on retaining washers to axles. Slide in the bolster, line up the second side frame with bolster and axles slip on and attach retaining washers to axles. Raise bolster and install springs or rubber. When we built these trucks we had planned on putting them under our gravel car. In past experience coil-springs would bottom out due to the weight of the gravel, so we tried spring

rubber, and it has shown to be a great success. We cut the 2" thick rubber 3" by 4" on a table saw. The rubber is held in place by a 1/4" hole in the center of the rubber. A 1/4-20 bolt is threaded in a tapped hole in the bottom of the side frame makes this assembly quick and easy.

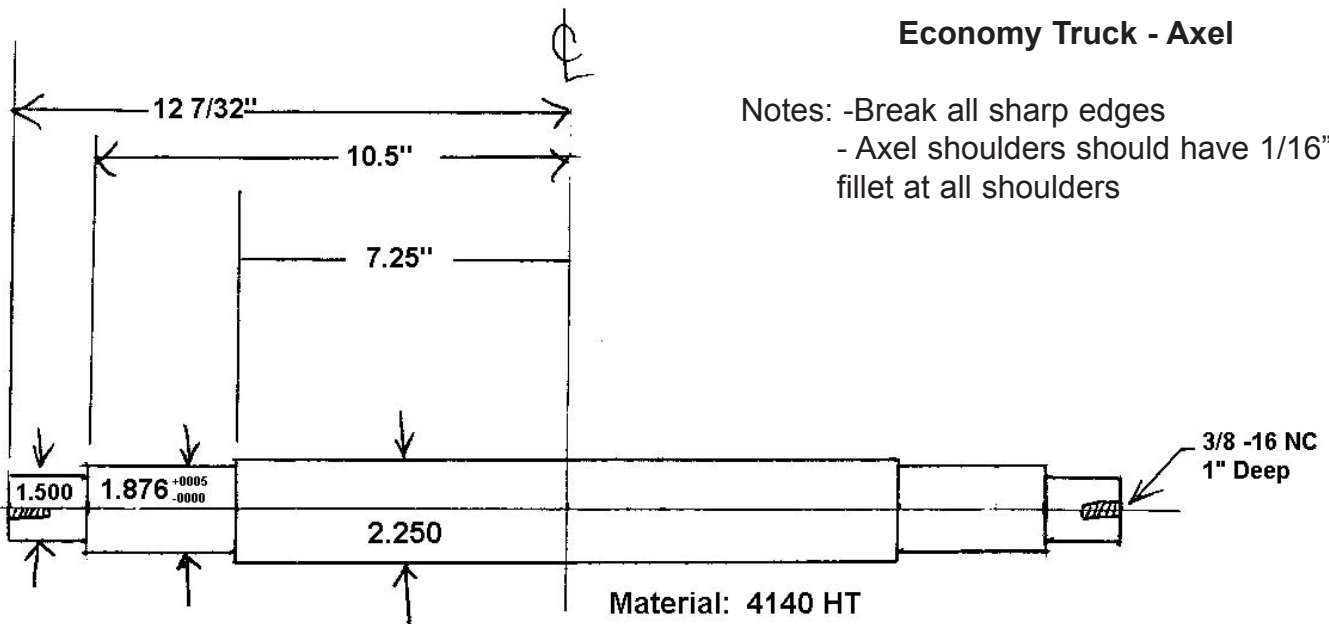
Next time we will talk about building an alco style coach truck that can also be used as a tender truck or diesel power truck.

*Darrell Klompmaker is a machinist for the Merrick Light Railway in Wisconsin. We appreciate his taking the time to provide this useful column which originally appeared in GSQ number 5..*

DRAWINGS CONTINUE ON FOLLOWING PAGES.

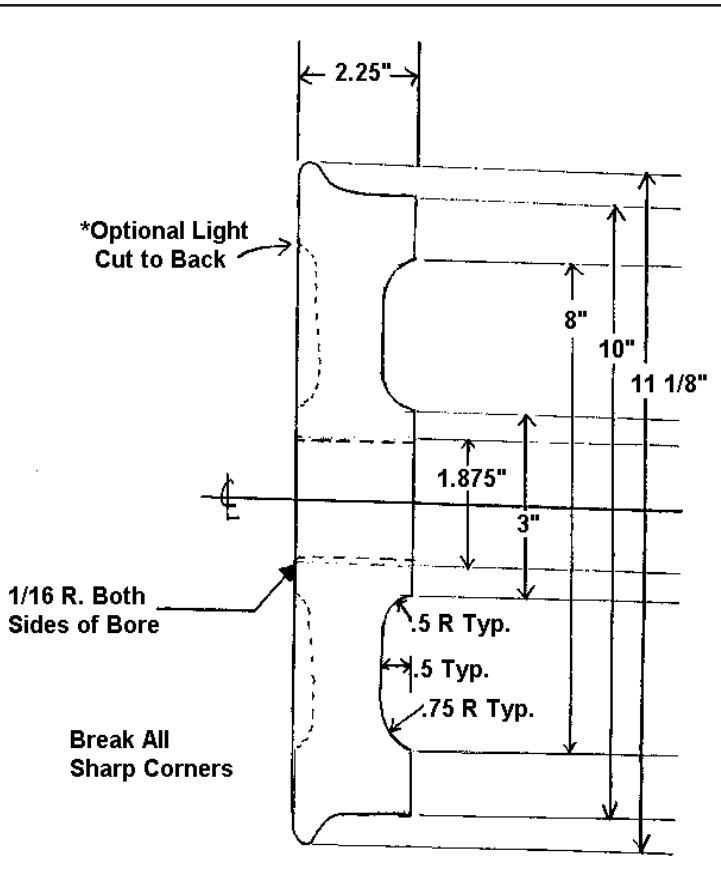
### Economy Truck - Axel

Notes: -Break all sharp edges  
 - Axel shoulders should have 1/16" fillet at all shoulders

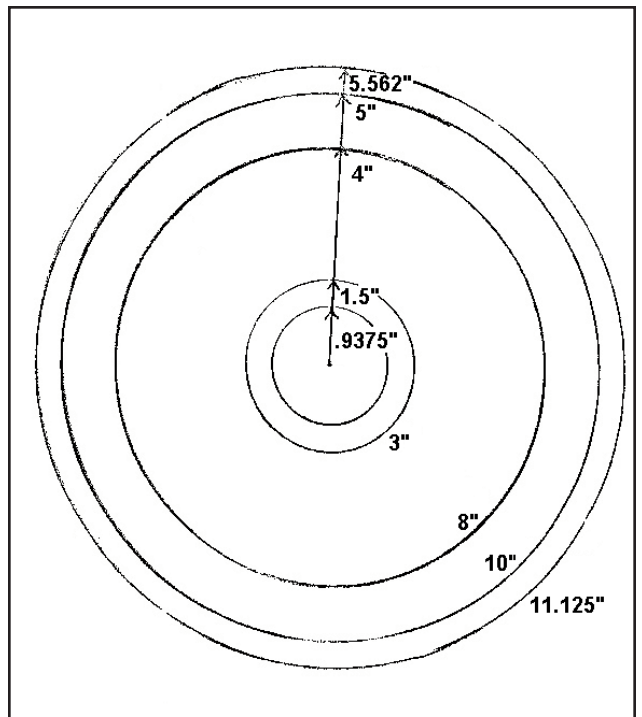


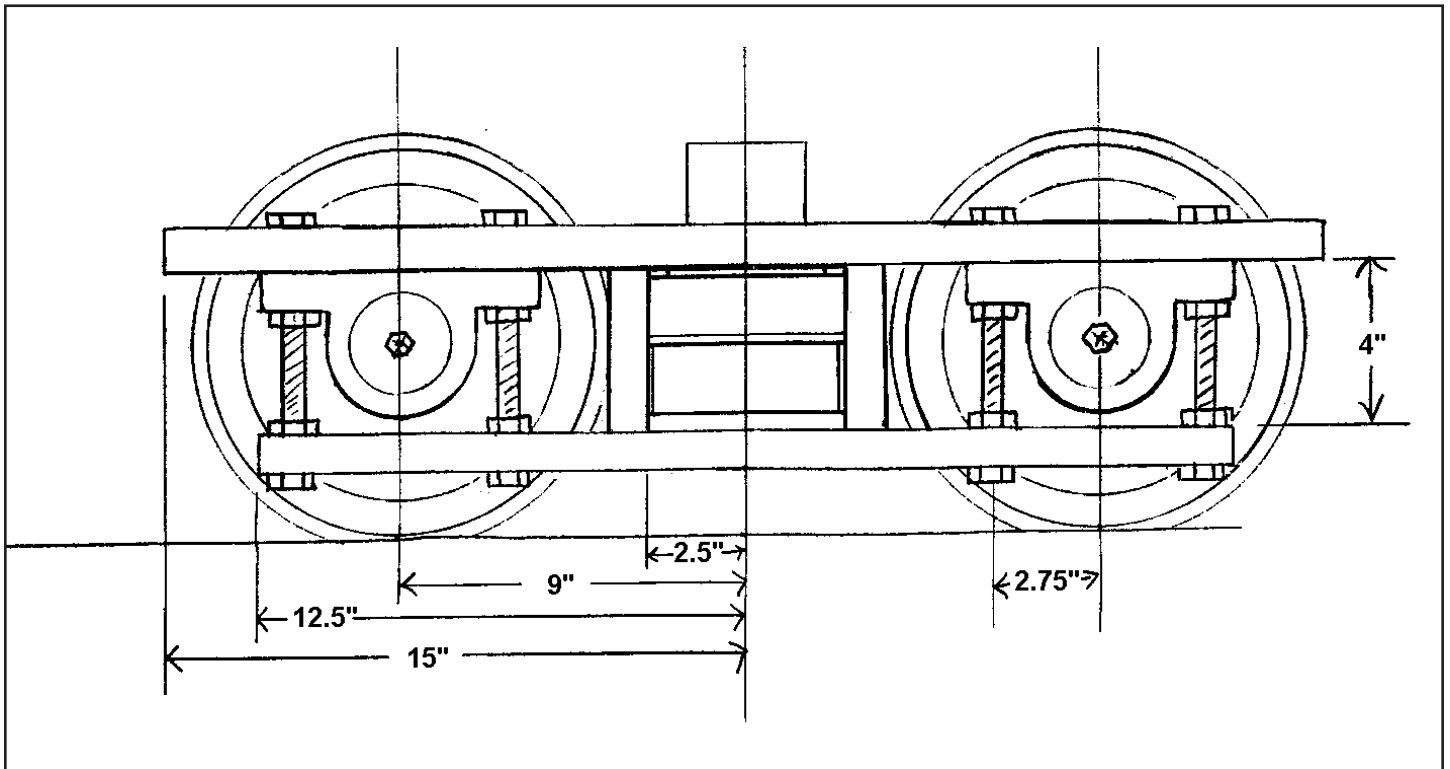
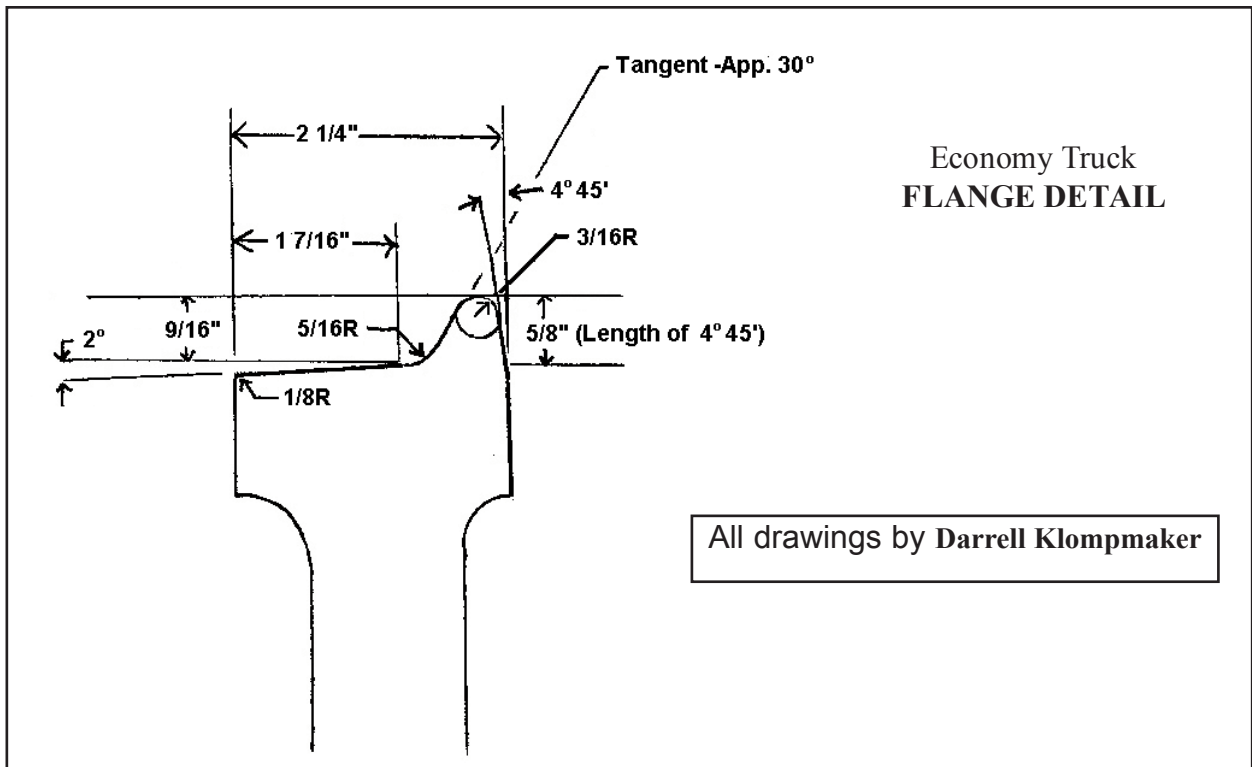
### LEFT: Economy Truck - 10" Wheel Profile

Material: 4140 2 1/2" x 11 1/2" forged round annealed for machining.



### RIGHT: Economy Truck 10" Wheel side





ABOVE: **Economy Truck**  
 10" Wheel / Short wheel base  
 1 1/2" standard pillow block  
 1/2" threaded rod

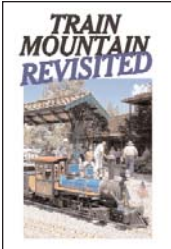
Spring rubber block (available from McMaster Carr - Part #8630K87 — Phone 630-833-0300)

Note: -end of axels tapped 3/8-16 to attach side frame retaining washer  
 -make washer 1/4" x2 3/8 from CRS)

# GIFT SHOP

## NEW DVDs and More!

### TRAIN MOUNTAIN REVISITED



The 2006 TM Triennial was even larger and more spectacular than in years past. This program takes us back to Train Mountain to enjoy this world class event.

Surprise footage features the world record setting operations!

\$29.95

### \* RIDING RAILWAY UNIVERSITY VOL 3



**The Fine Art of Laying Track** –Mark Flitton  
**ABC's of Tender Building** –Don Orr  
**Proposed North American Safety Standards** –Quentin Breen

**Stability Problems & Solutions** –Bill Donovan

**The Sum of Parts** –Paul Lavacot  
**RGS 20 Project: Three Years Later** –Tom Artzberger

**Boiler Inspection** - Pat Durand  
 \$39.95 (2 disk set - over 5 hours of instruction)

### \* RIDING RAILWAY UNIVERSITY VOL 4

**"Curves You Can Bank On"** –Glenn Peterson

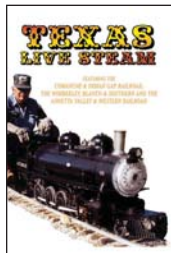
**Steel Car Construction** –Paul Vernon  
**Machine Shop Tips** –Jim Boyer  
**Updated Operations at TM** –Russ Wood

**Details Details –From On30 to 2.5" Scale** –Peter Moseley

**Building a K-27** –Kevin Doe  
**How to Cripple Your Locomotive** –Cal Tinkham  
 \$39.95 (2

set - over 5 hours of instruction)

### TEXAS LIVE STEAM DVD



Come on y'all and visit three of the nicest 7.5" gauge railroads in the glorious state of Texas! You'll be impressed with the size and quality of Nick Edward's newly built **Wimberley**

**Blanco & Southern.** You'll learn about large scale Operations at Roy Pickard's down-home **Comanche & Indian Gap.** And you'll really enjoy the welcoming atmosphere at Terry McGrath's **Annetta Valley & Western.** A must for Texans and for anyone interested in seeing how live steam railroading should be done.

\$29.95

### STEAM ON THE MOUNTAIN DVD

There aren't many places left where a steam engine can be seen working on the very rails it did when it was brand new. In Steam on the Mountain you'll see a 1914

Baldwin Mikado working the same grades in the shadow of the same mountain it saw over ninety years ago. You'll ride in the cab with the engineer and the fireman as they reign in the power of a loud, bucking "iron horse". You'll see close-up shots of the powerful drive rods and steel wheels. You'll enjoy the dramatic scenery and hearing the engineer describe what it's like to run a steam engine over a railroad he has worked on for decades. And there is no sound in the world like a lonesome



steam whistle echoing through the pine trees.

DVD \$19.95

Companion Audio CD \$9.95

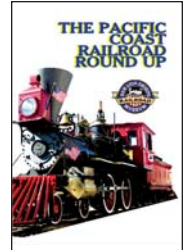


disk

### PACIFIC COAST RR ROUND UP DVD

The Pacific Coast is a private railroad on the Central California coast.

It is opened to the public only once each year, as a fund raiser for the San Luis Obispo Railway Museum. This DVD takes you aboard the charming narrow gauge train. It features vintage steam engines (including the one that was in the opening shots of Dr. Quinn, Medicine Woman TV show with Jane Seymour). The coaches are genuine Disney coaches - the first coaches to be used in service at Disneyland. Great for railfans, narrow gaugers, families, Disney enthusiasts and anyone else who would just enjoy a good show. Approx. 1 hour with bonus features. \$19.95.



### ORDER TODAY

530-527-0141



Robinson & Associates  
 PO Box 8953, Red Bluff, CA  
 96080 USA

Fax: 530-527-0420

(Order form on reverse.)

# ORDER FORM

**Bill To:** \_\_\_\_\_ **Ship To:** \_\_\_\_\_

**Address:** \_\_\_\_\_ **Address:** \_\_\_\_\_

**City:** \_\_\_\_\_ **St.** \_\_\_\_\_ **Zip** \_\_\_\_\_ **City:** \_\_\_\_\_ **St.** \_\_\_\_\_ **Zip** \_\_\_\_\_

**Phone:** \_\_\_\_\_ **Ext.** \_\_\_\_\_ **Phone:** \_\_\_\_\_ **Ext.** \_\_\_\_\_

**E-Mail Address:** \_\_\_\_\_

### PAYMENT INFORMATION

Please charge my:  Visa  Mastercard  Discover Card  Check enclosed

**Credit Card #:** \_\_\_\_\_ **Exp. Date:** \_\_\_\_\_

**Name on Card:** \_\_\_\_\_ **3 dig. security code:** \_\_\_\_\_

**Signature:** \_\_\_\_\_

Please return form  
and payment to:

**Robinson &  
Associates**  
PO Box 8953  
Red Bluff, CA  
96080

ITEM	QTY	COST	EXTENDED
Train Mountain REVISITED 2006 DVD <i>NEW!</i>	_____	29.95	\$ _____
Train Mountain Triennial 2003 DVD	_____	29.95	\$ _____
Riding Railway University, Vol. 3 <i>NEW!</i>	_____	39.95	\$ _____
Riding Railway University, Vol 4 <i>NEW!</i>	_____	39.95	\$ _____
Riding Railway University, Vol. 1	_____	39.95	\$ _____
Riding Railway University, Vol 2	_____	39.95	\$ _____
Texas Live Steam DVD	_____	29.95	\$ _____
Big Little Railways Continued DVD	_____	29.95	\$ _____
The Magic of Grand Scale Railroading DVD	_____	29.95	\$ _____
Steam on the Mountain DVD	_____	19.95	\$ _____
Steam on the Mountain Audio CD	_____	9.95	\$ _____
Pacific Coast Railroad Round Up DVD	_____	19.95	\$ _____
RENEW my US sub to Grand Scales Quarterly	_____	25.00	\$ _____
RENEW my US sub to 7+RAILROADER	_____	22.00	\$ _____

**SHIPPING AND HANDLING**

\$5 for one or two items  
\$8.50 for 3 or more items  
**Free shipping for orders over \$100**

Sub Total	\$ _____
Ca. Sales Tax (7.25%)	\$ _____
Shipping	\$ _____
Discount from pg 1 (if applicable)	\$ _____
<b>TOTAL</b>	<b>\$ _____</b>